

<input type="checkbox"/>	YES	<input type="checkbox"/>	N/A
<b>PLEASE DOUBLE CHECK WORDING</b> Type had to be reset for cleaner imprint (original art was not vector)			

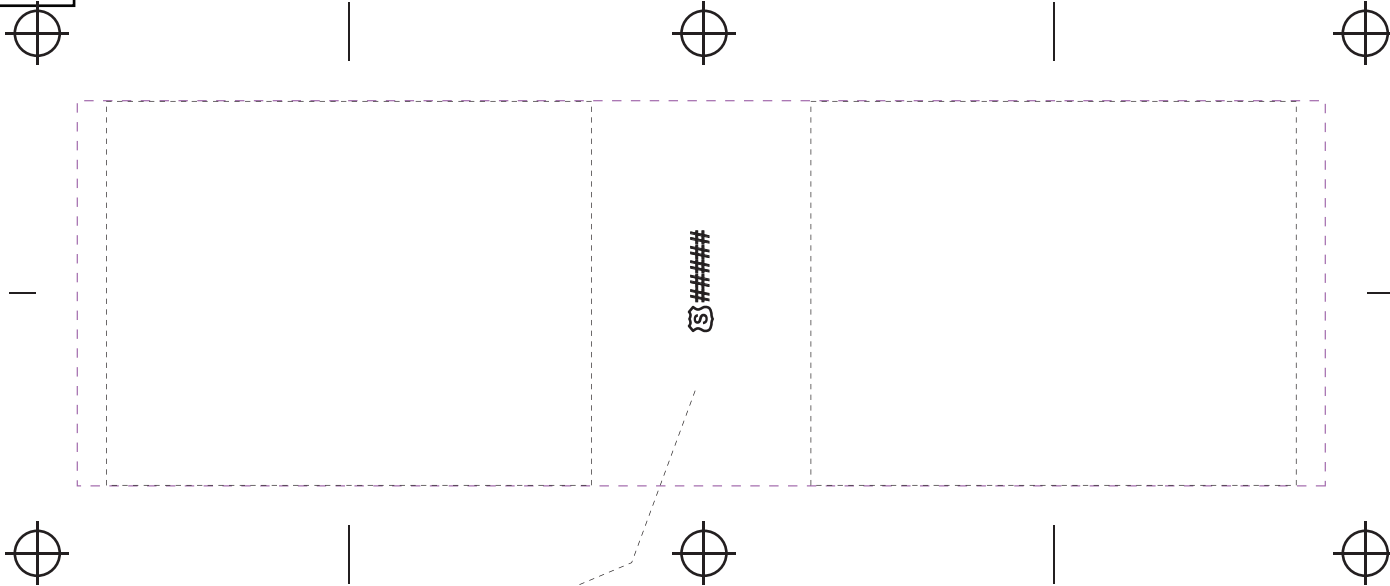
### Imprint Area

- - - - - Wrap - 2" tall x 6 1/2" wide
- - - - - 1 or 2 sided - 2" tall x 2 1/2" wide

Dotted line shows Imprint area  
 TJC- The Juicy Cup 7oz

**THIS ORDER WILL NOT BE PROCESSED UNTIL THIS PROOF IS RETURNED**

Printing can take up to 5 days from time we receive signed art approval.



CPSIA tracking #  
 can be placed anywhere within  
 imprint area and will  
 print along with artwork.

#####

## ART APPROVAL FORM

Fax Proofs are not true to size due to fax image shrinkage.

**Based on CPSIA requirements\* printer will include our Safety Shield & each new order # within imprint on all Children's Products for easy tracking.**

**ATTENTION:** This proof is for your protection against inadvertent errors. While every attempt is made to avoid errors or omissions in artwork, final proofing and approval must rest with the customer.

**PLEASE REVIEW WITH CARE!** Signature below releases printer from any liabilities of typographic or any other proof errors.

**Please Check One :**

O.K. AS IS

O.K. w/  
CHANGES

MAKE CHANGES  
AND FAX NEW PROOF

Date: \_\_\_\_\_

Signature: \_\_\_\_\_ Print: \_\_\_\_\_

P.O. NO. 0

IMPRINT COLORS 0

PRODUCT COLOR Assorted LID Clear

IMAGE PLACEMENT 2 sides

*\*CPSIA Section 103(a), generally states all childrens products must be identified in a way to track where and when a product is manufactured.*

OE 0 Prod. TJC

Art Link	ART IN	APP IN	Proof OUT	Proof IN	ART C	APP C	Film Print